

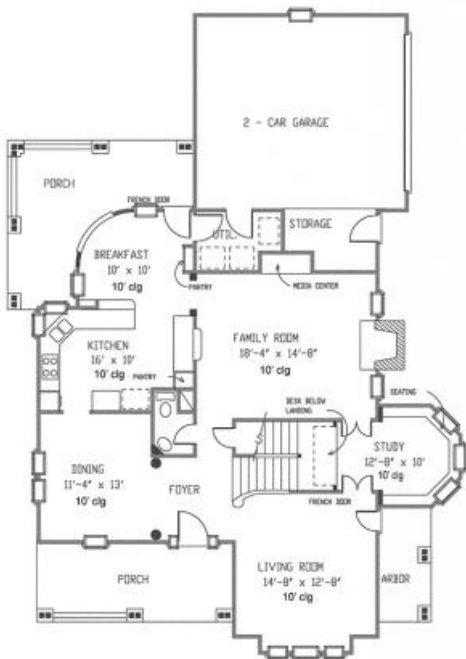
CREATE THE PERFECT COMMERCIAL PROPERTY

APPLIED ARCHITECTURAL DESIGN DRAFTING 405

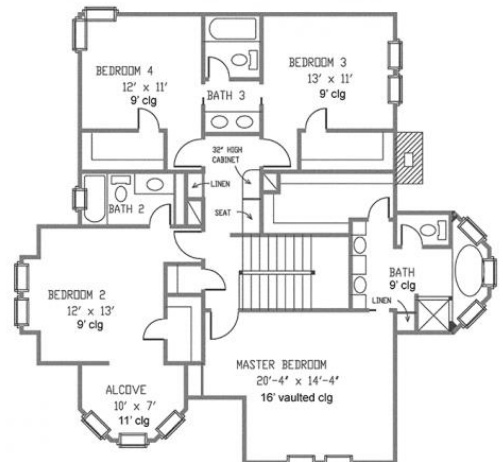
In the world we live in today, one of the most valuable commodities you can possess is space, especially in and around cities and towns. All too often we waste space, not really utilizing every square foot to its full potential. If you have an office, chances are you have lots of extra room – even if you don't realize it. Take a look at the spaces around your and ask yourself: is this space really used to its maximum capacity?

All spaces are not necessarily meant for a single purpose. The concept of utilizing or renting a place to work has become so popular that it is not just traditional office spaces that are being used for offices/commercial areas. Large apartments or houses have converted rooms or areas into dedicated offices or shops, these work particularly well if you live close to a city center or a bus depot/train station, where there is lots of foot traffic. As long as the premises are clean, uncluttered, quiet and offer all necessary amenities, there is really no limit on what the space could be used for.

STAGE 1: Come up with a PURPOSE or USE for the space provided to you. This project requires you to come up with a space that allows you to utilize the space to its fullest potential. All aspects MUST be included. Some include but are not limited to, use of space, design and functionality of space, various interior design elements.



MAIN FLOOR



SECOND FLOOR

STAGE 2: Once you have come up with a plan for your space, remove and place walls where applicable. Trace the plan as necessary. You cannot add onto the space. You must also include a utility room as this Victorian Home does not have a basement. Include all doors and windows as required. Create a complete window and door schedule for the space and ensure that you compare to the windows that are currently in the dwelling. Place all furniture, fixtures and necessary features in the space

STAGE 3: Complete an electrical plan that meets the needs of the space. Think about how you are going to utilize the space, and place electrical accordingly.