

# CREATE A CHRISTMAS ORNAMENT

## LSRCSS

Give back this holiday season by creating a ONE OF A KIND Christmas ornament. All ornaments will be given to families in need, through the LSRCSS Christmas Hamper Drive.

### Parameters

- 130mm x 85mm x 20mm (max)
- Must use a minimum of 8 different features/commands while creating your ornament.
- Design must be holiday related.
- Two ornament files are to be submitted upon completion (onto flash drive).



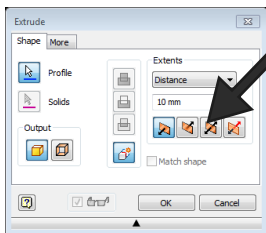
IPT & STL

Along with the submission of the two ornament files, all students are required to 3D Print their part.

A detailed tutorial (step-by-step instructions) of how to create the ornament must be created, printed and submitted. The tutorial must include pictures (screen shots), as well as, instructions. *Be cautious of spelling and grammar!*

### A few tips/reminders:

- One cannot alter (revolve, extrude, array-circular) a **SKETCH**, you must create a sketch then turn that sketch into a **FEATURE**.



- The mirror command can be tricky, be sure to *extrude* an equal distance on either side of your axis.
- Spend some time getting familiar with *Autodesk Inventor* before you start this assignment. Becoming more familiar with help with ease in creation of the ornament.
- See CONVERT TO STL help sheet located on the website to help to convert your ornament to a 3D Printer friendly file.

# Have Fun & Be CREATIVE!

*Some ideas to get your creative juices flowing....*

